



EXELOO • RBA – PARTNERS OF LOCAL GOVERNMENT

Sponsors of LGA, LGAQ, ULGA and LGANT

WE WELCOME OUR NEW CUSTOMERS

Cairns Regional Council, Queensland. The first 2 Exeloo in Far North Queensland were installed in the high profile tourist precincts of **Port Douglas**. The feed back from the public is overwhelmingly positive and praise for the clean and vandal resistant toilets came as far as from the USA.

Councillor Paul-Warr King from the City of Gresham in Oregon USA wrote us: *I recently returned from a visit to your great country and visited your new installation in Port Douglas, North Queensland.*

Our City is in the process of several park improvements which include the installation of vandal proof toilets. I was so impressed by the cleanliness and safety of your installation, I would like to know if you have a distributor in the US that we could contact and a rough estimate of what a typical installation would cost.

Many Thanks



Exeloo Port Douglas

Katherine Town Council, Northern Territory



Katherine Town Centre

Katherine installed their first Exeloo in March this year in the CBD providing a safe and hygienic toilet facility to visitors and locals. The installation proves that Exeloo installations, which are highly visible, blend in well with the street scape and more importantly help to reduce vandalism and anti social behaviour associated with public toilets.

East Arnhem Shire, Northern Territory

Remoteness and distance is no hindrance for Exeloo. After 3 weeks transport by truck and by barge from Port Brisbane via Darwin, 2 Exeloo III APT arrived at the Aboriginal Community of Gapuwiyak where they were installed in the town centre.



Alderman Nicki with Exeloo RBA's Peter Gorges

Strathfield Municipal Council, NSW

The first Exeloo in the Strathfield area will be located in Dean Park, South Strathfield.

Queensland Rail

Queensland Rail has installed an Exeloo Titan on the platform of Wynnum Station, Brisbane. They choose Exeloo for the same reasons as Local Government Authorities throughout Australia. To provide a safe and hygienic toilet facility, which does not discriminate against the disabled and resists vandalism and loitering.



Exeloo Titan Wynnum Station



Carlton Railway Station

Railcorp NSW

Railcorp installed an Exeloo III as part of the refurbishment for disabled access compliance of Carlton Railway Station.

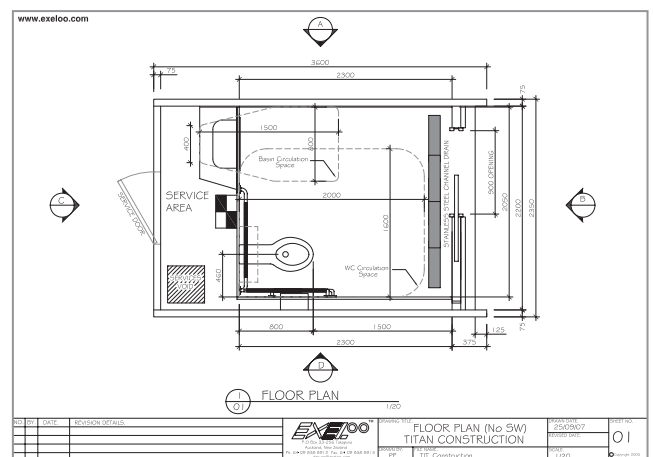
EXELOO TITAN

- has been appraised by Access Design Australia. The appraisal confirms that the Exeloo Titan meets all of the Federal Disability Discrimination Act – 1992 and the Australian AS 1428 Suite of Standards design

continues next page...



Exeloo Titan Darwin Sunset Park



Titan Floor Plan



Titan Interior

and functional requirements for people with disabilities. Provision has been made to allow 90% of people with disabilities to access and use the new Exeloo Titan APT in an equitable, independent and dignified manner! Exeloo Titan is the only public toilet complying with AS 1428.1 as well as AS 1428.2 and the proposed new code (DR04019).

SAFE DESIGN OF PUBLIC TOILETS

Safe design of public toilets should have a high priority for cities and towns in Australia. The ever increasing incidents of violence, drug abuse, anti social behaviour and vandalism require a re-thinking of public toilet design. The most important factor to overcome these problems is the location of the public toilet. When the location is not appropriate, design and public toilet management are most likely ineffective.



Campsie Mall



Sydney Road, Seaforth

Public Toilets should be located in a highly visible and well frequented location ensuring maximum active surveillance. Misuse of Public Toilets is greater away from active areas. The public feels safer at locations that are visible and where there is constant activity.

The exterior of a public toilet should present well and ensure users that the facility is welcoming, clean and safe.

The entrance should not be

shared. Single user, unisex toilets are the preferred option.

The interior of the facility should be well lit. There should be open sight lines, no concealments, light coloured easy to clean surfaces such as tiles and porcelain coated steel panels, vandal resistant fittings and materials and floors with non slip surfaces.

Other considerations are external lighting, landscaping and others. Please ask us for advice when planning your next public toilet project.



The Esplanade, Darwin



Bradfield Plaza, North Sydney

We have considerable experience with over 400 Exeloo installations throughout Australia. Our approach to public toilet design is confirmed through findings by The National Crime Prevention, The City of Melbourne, The American Rest Room Society and many other overseas authorities involved in managing or designing public toilet facilities.

PECUNIA NON OLET!

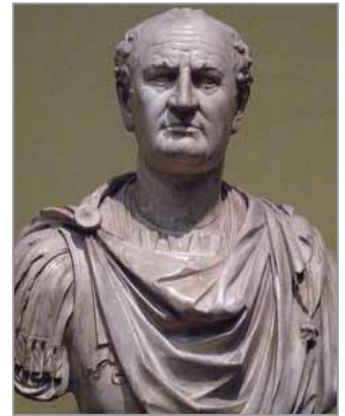
In plain English " MONEY DOES NOT STINK!

Have you ever considered charging money for the use of public toilets? Well you might think twice after reading the following story.

The earliest pay toilets known were erected in ancient Rome, 74 AD during the rule of Vespasian after a civil war depleted Roman finance.

Vespasian used the money to rebuild his army. Naturally not everyone agreed with the measure including his son Titus. So he held a coin from the pay toilet under Titus nose

and asked him if the smell offended him. Titus responded negatively, to which Vespasian replied "e lotio est" ("And yet it comes from urine"). "Pecunia Non Olet! Money does not stink. Here we go! And imagine, when a Roman Emperor can finance an army from charging money for public toilet use, what it could do for your budget if you would do the same. Exeloo offers Coin or Card Operation as an option.



Vespasian

INTERNATIONAL EVENTS

The World Toilet Summit 2008 will be held in Macau, November 4-6, 2008.

DID YOU KNOW?

2008 has been designated as the United Nations International Year of Sanitation.

EXELOO RBA

Phone: 1300 788 778 • Fax: 1300 788 878

www.exeloo.com.au

EXELOO Self Managing Public Toilets - so much more than just a convenience . . .